

Upcoming Events

January 28th, 2016

1300 hrs

Private Dining Room, CRC

Improved techniques for monitoring and investigating polar cap absorption: Understanding space weather effects on HF radio communication by Dr. Robyn Fiori.



Robyn Fiori

Abstract:

Shock waves produced in front of coronal mass ejections can accelerate solar energetic protons Earthward where they are guided by the Earth's magnetic field into the high-latitude polar cap region. Energetic >10 MeV protons can penetrate into the ionosphere increasing ionization in the D-region causing a polar cap absorption (PCA) event potentially blocking out high frequency (HF) radio communications at high latitudes. This is of direct importance to the safety of transpolar flights which communicate using the affected radio signals. Riometer instruments are able to monitor variations in ionospheric absorption by observing background cosmic radio noise.

This presentation introduces the development of a new two-dimensional visualization tool for viewing riometer-derived absorption on a Canada-wide scale. Such a visualization tool will greatly enhance the monitoring and investigation of ionospheric effects on HF radio communication allowing system operators to optimize system performance thereby contributing to the reduction of economic losses during PCA events.

Dr. Robyn Fiori is a research scientist for the Canadian Hazards Information Service of Natural Resources Canada specializing in space weather and ionospheric physics. Her research is applied to the development and improvement of space weather tools and forecasts to be used by operators of critical infrastructures and technologies in Canada. Her research has been published in numerous peer reviewed scientific journals including the Journal of Geophysical Research, the Journal of Atmospheric and Solar-Terrestrial Physics, and Space Weather. Dr. Fiori received her B.Sc., M.Sc., and Ph.D. from the University of Saskatchewan Department of Physics and Engineering Physics while studying in the Institute of Space and Atmospheric Studies.

Robyn was our host at the May 2015 Space Weather Field Trip where she gave us a great tour and informative presentation about space weather. I encourage you to attend this Friends' presentation... while the description may sound very technical, Dr. Fiori is very skilled in making the subject matter comprehensible, even to a semi-retired photographer such as myself!

All events are in the **Private Dining Room**, Bldg. 4 at 1300 hrs unless otherwise noted.

Renovations to Bldg. 2 are not expected to be completed before Summer 2016.

Friends and spouses, Shirleys Bay staff are all welcome, but **please be advised of updated security requirements on Page 4.**

Join the Friends for lunch before the presentation in the Shirleys Bay Cafeteria, Bldg. 4!

Obituaries

Demetre Athanassiadis



Those of you involved in the MSAT program in the early 1990s will remember Demetre.

[Obituary...](#)

John Crysdale



John worked at DRTE and CRC for many years from the late 1950s.

[Obituary...](#)

Ann Markwick



CRC Image 05-3232

Ann was a well-loved personality with the Commissionaires at CRC. She lived just west of the campus for many years, and despite having been in Canada for well over half a century, never lost her charming Scottish west coast accent!

[Obituary...](#)



CRC Image 02-5575; CRC Commissionaires and Security Staff, 2002; Ann front row, third from right.

John Tyrala



Many of our older members will remember John Tyrala from his days with CRC Security, as well as his involvement with curling at CRC.

[Obituary...](#)

Visitor Access

Please remember that we need to provide a Visitor Clearance Request (VCR) short-list of members who plan to attend **any** CRC events.

Accordingly, if you plan to attend the January 28th lecture, you **must notify Andre Kennedy of your intention to do so by January 26th.**

If you do not state your intention to attend in advance, you will be denied access to CRC at the Reception Centre.

Please contact our **Badge and Access Coordinator Andre Kennedy** for details and action.

Christmas Lunch 2015 Photos



15-2343; Lloyd Mason, Barry Felstead



15-2351; Venetia Moorhouse, John Colbert,
Doris Jelly



15-2346: Jim Sawtell



15-2345, Frank Vigneron, Dick
Bonnycastle, Rolf Mamen, John Gilbert



15-2348; Arto Chubukjian



15-2349; Ann Marie Diotte, Neville Reed

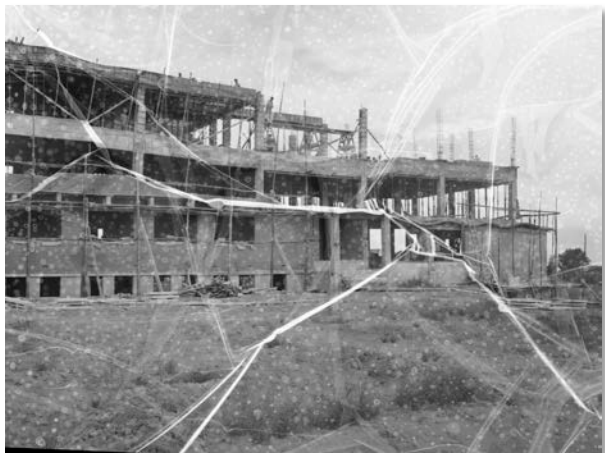
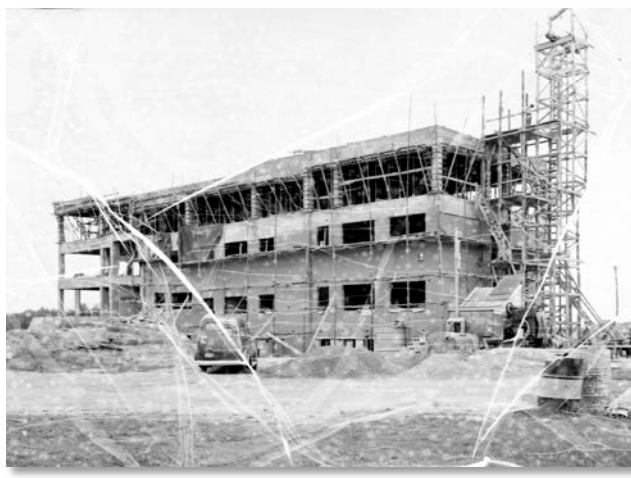
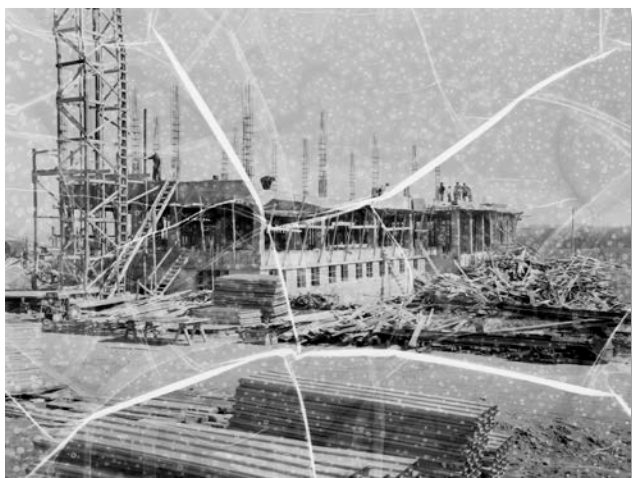
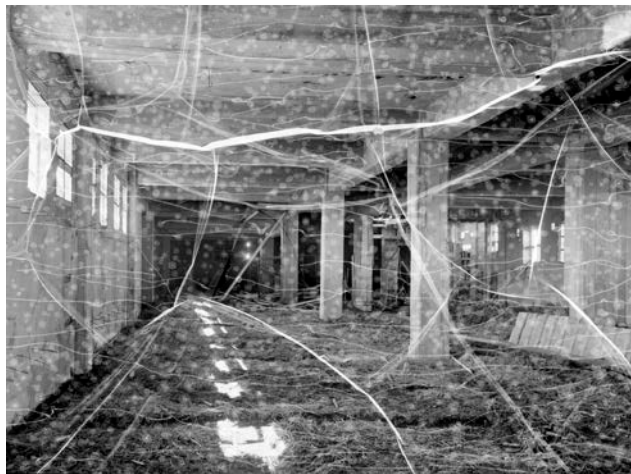
All images courtesy John A. Brebner/Friends of CRC

Billowes' Rant will appear again next month. Colin is once again having too much fun in Florida to complain about anything!

From the Image Archives... RPL Construction, 1951

It seems appropriate to show the earliest extant construction photographs (c 1951) of the DRTE site, now that Bldg. 2 renovations near completion. All images are from the CRC Image Collection, and are from 1951-1952. The poor quality of many of the images is a result of their being made on an unstable diacetate material. Degradation of the image collection over the past 65 years has resulted in the separation of the image emulsion from that base. *Images, clockwise from top left: 53-RPL-0234, 53-RPL-0237, 53-RPL-0281, 53-RPL-0271, 53-RPL-0260, 53-RPL-0265.*

(Please click on any image to download a full-size version)



Message From The Chair

Best wishes for 2016 from your Friends' Board!

We had a very successful year, with the donation of the F.T. Davies document collection to the Canada Science and Technology Museum in November. That event was attended by both Museum personnel, CRC President Jean Luc Bérubé, as well as a brief visit from CEO Alex Benay which marked a continuation of the Friends and CRC's collaboration with the Museum. A number of our members were involved with this event, including Doris Jelly, John Gilbert, Neville Reed, Arto Chubukjian and myself.

Our Christmas Lunch was well attended at our new Carlingwood venue, and it was great to see both older members as well as some new faces at that gathering. Many thanks to Neville Reed for organizing this event!

We have a great slate of speakers for 2016, thanks to Arto Chubukjian who has enthusiastically embraced the job of lecture coordinator.

But our organization is only as good as the support of its members. We welcome any contributions for our newsletters or website, whether those be old photographs, reminiscences, or just web-links to items that might be of interest. Please show your support by attending our presentations!

If you have skills that you'd like to offer the Friends, please let us know! Or if you have questions about the early years of DRTE/CRC... ask! Your Board alone has over 500 years of DRTE/CRC working experience and knowledge that we are happy to share!

Now that Industry Canada has expanded to become Innovation, Science and Economic Development Canada, it's more important than ever to preserve our DRTE/CRC history for future generations!

John A. Brebner, Chair

Contact us...

Chair, Archivist, Newsletter:	John Brebner	john.brebner@brebner.com	613.731.6220
Secretary:	Neville Reed	nev_reed@yahoo.ca	613.596.1434
Membership:	Seymour Shlien	fy733@ncf.ca	613.722.1296
Badges and Access:	Andre Kennedy	aek@storm.ca	613.829.9697
Talks and Special Events:	Arto Chubukjian	arto.cp@gmail.com	613.257.4493
Website:	friendsofcrc.ca	info@friendsofcrc.ca	613.990.6673
Face book Page:	facebook.com/CRCFriends		
Mailing Address:	Friends of CRC, 3701 Carling Avenue, P.O. Box 11490, Stn. H, Ottawa, ON K2H 8S2		
